

# Shifts in Resource Management: Collaboration on Cumulative Effects

**Maya Paul and Carley Coccola**

*North Coast Cumulative Effects Program*

*Canada*

[maya.paul@ncsfnss.ca](mailto:maya.paul@ncsfnss.ca); [Carley.Coccola@gov.bc.ca](mailto:Carley.Coccola@gov.bc.ca)



# Shifts in Resource Management: Collaboration on Cumulative Effects

IAIA 2022

Maya Paul and Carley Coccola

May 5, 2022

Background Image © Maya Paul

# OUTLINE

- Who we are
- Where we are
- What we do
- How we do it
- Looking ahead



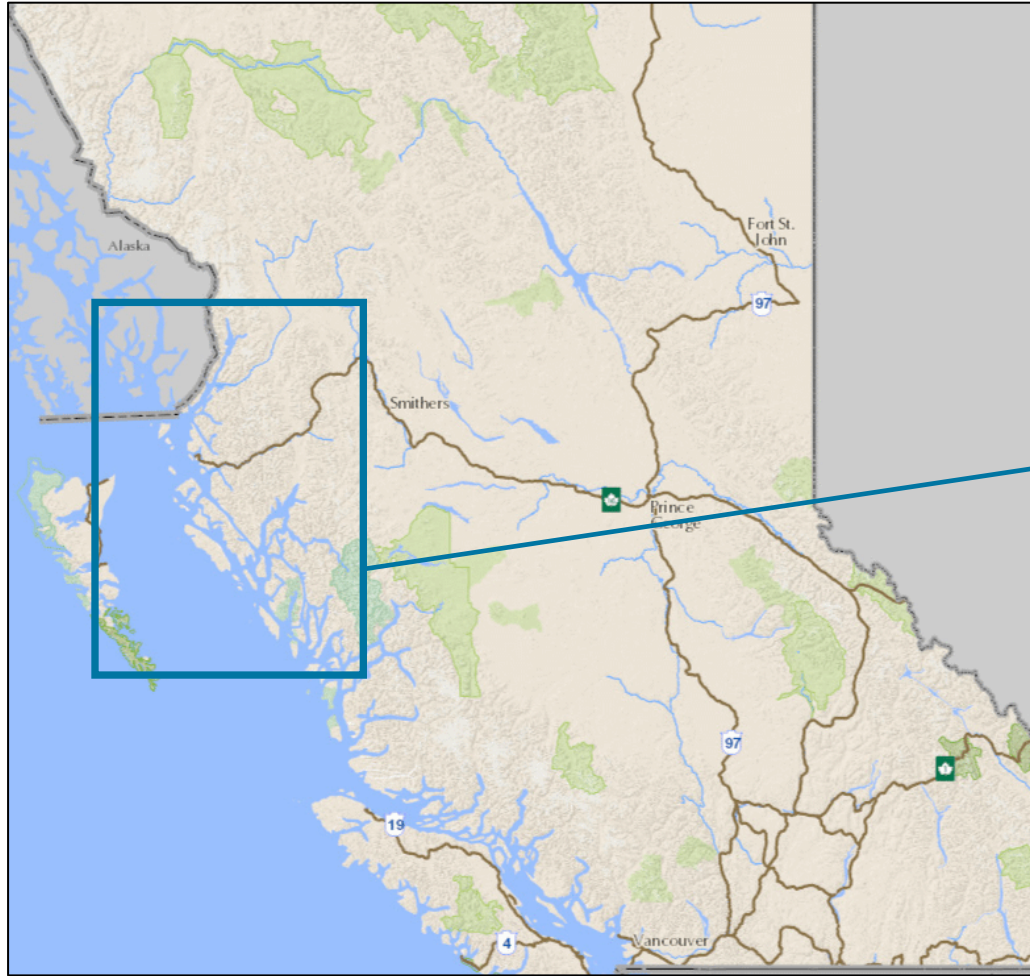
Images © Maya Paul (top two) and Gitxaala Nation (bottom)

# WHO

- Six Partner Nations:
  - Gitga'at First Nation
  - Gitxaala Nation
  - Haisla Nation
  - Kitselas First Nation
  - Kitsumkalum First Nation
  - Metlakatla First Nation
- Province of British Columbia (BC)



# WHERE

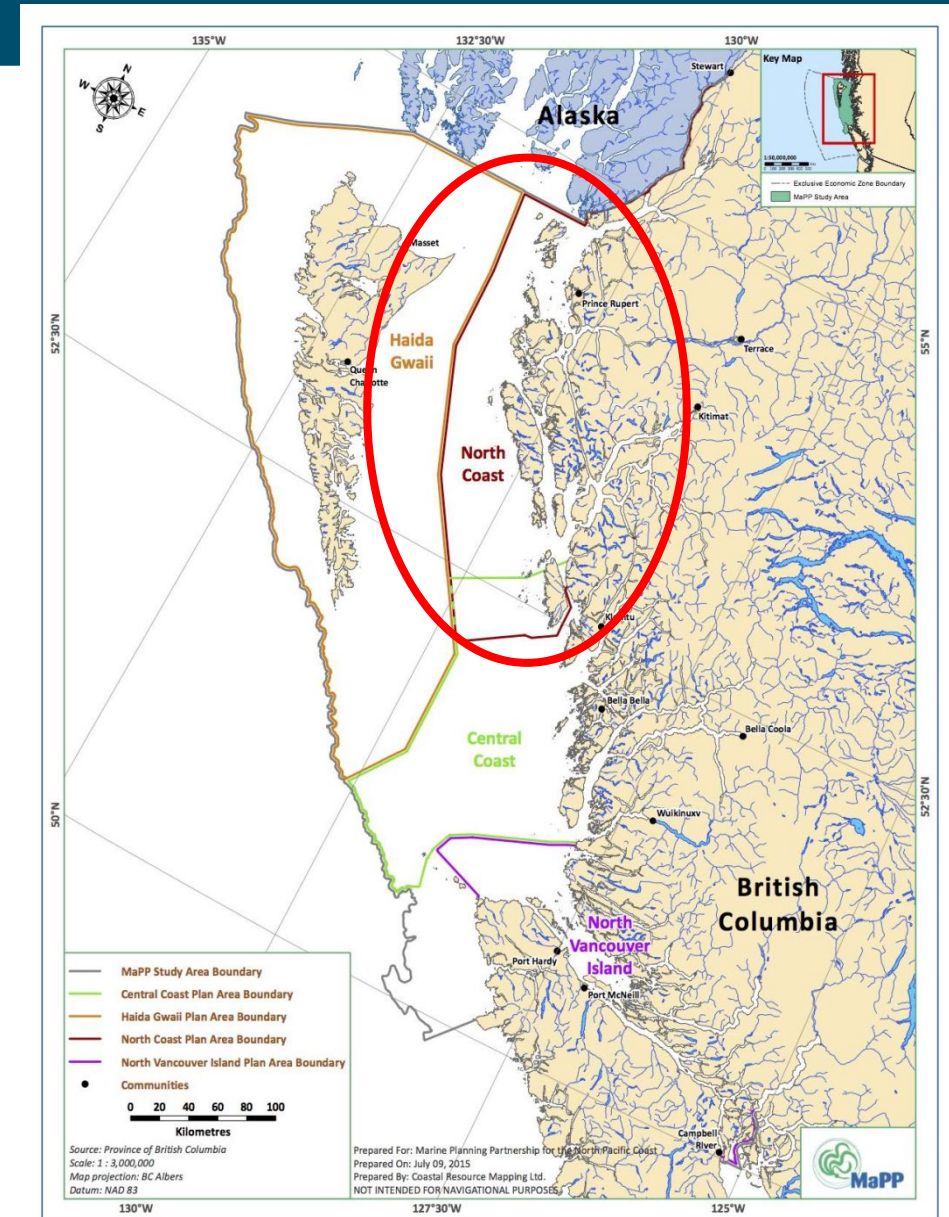




WHAT

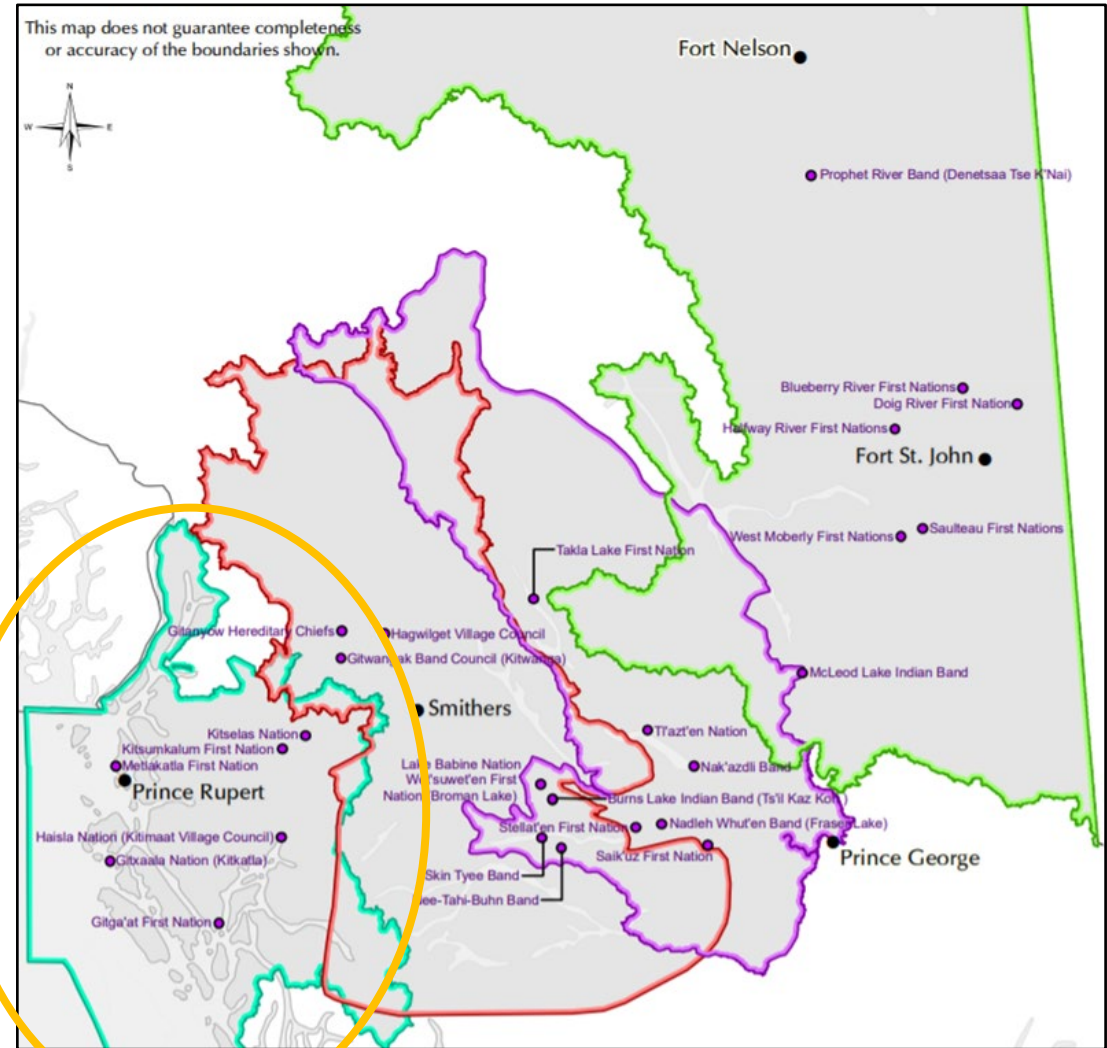
# Marine Plan Partnership (MaPP)

- Collaboration between 17 North Pacific Coastal First Nations and the Province of BC
- Four subregional marine plans supported by a Regional Action Framework: Haida Gwaii, North Coast, Central Coast and North Vancouver Island
- Goals:
  - Protect the marine environment
  - Promote sustainable economic development
  - Support coastal community well-being



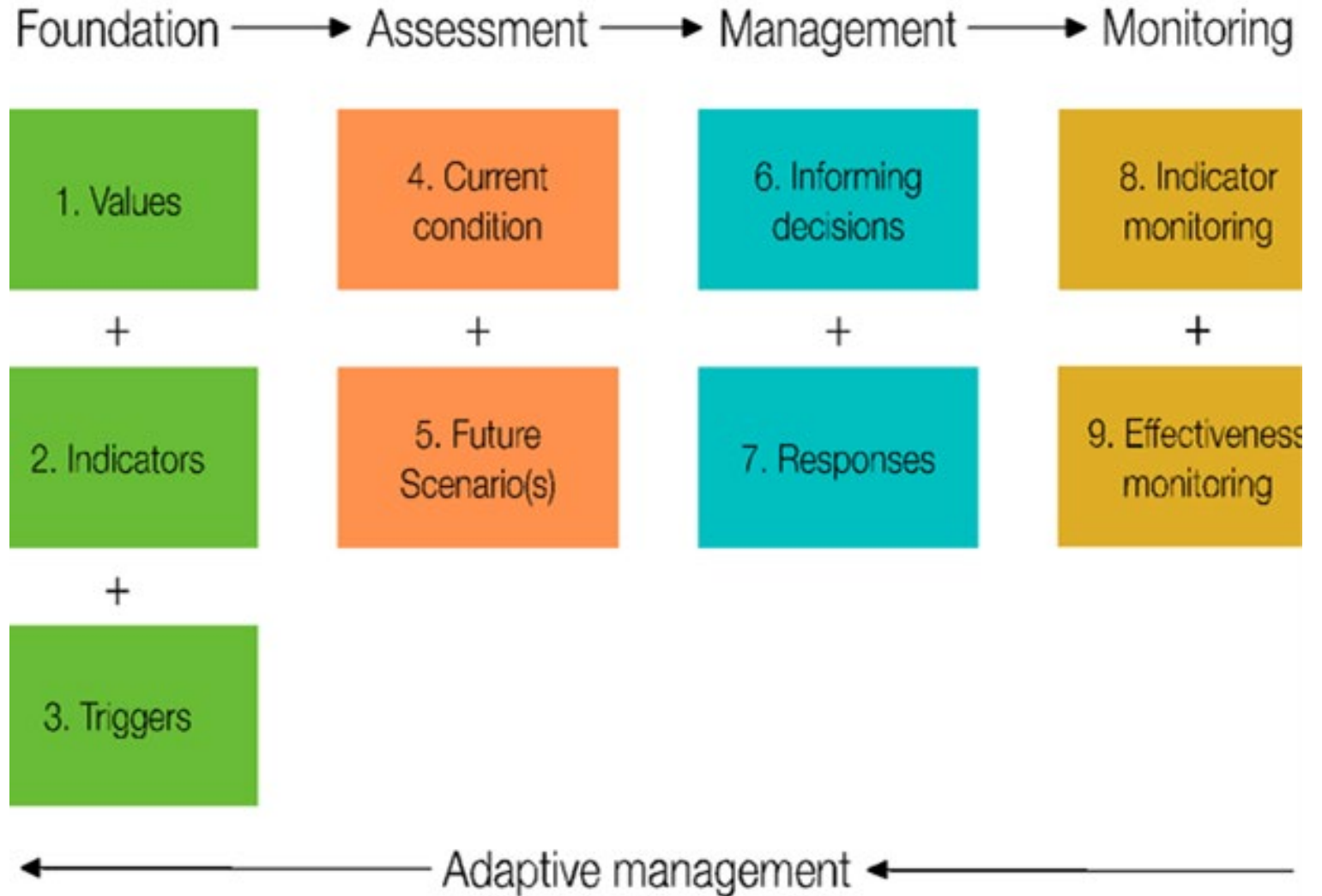
# Environmental Stewardship Initiative (ESI)

- Created in 2014 in response to Indigenous Nation concerns identified during the regulatory process for natural resource developments
- Co-designed projects that Indigenous communities have a direct role in implementing and managing
- 30 participating Indigenous Nations in Northern BC organized into four regions: Northeast, Omineca, Skeena, and North Coast





# NC ESI and NC MaPP aligned to produce an integrated North Coast Cumulative Effects (NC CE) Program



Wilson 2020



HOW

# Key Principles

- Common set of collaboratively identified values and objectives
- Recognition of the authority of provincial, federal and Indigenous governments
- Inform decision making using trusted data that considers Indigenous Knowledge (IK) and western science
- Scientific uncertainty should not prevent the development and implementation of management actions
- Iterative, adaptive and proactive



Images © Kitsumkalum (top); Jolene Brown (bottom)

# Principle: Collaboratively Identified Values

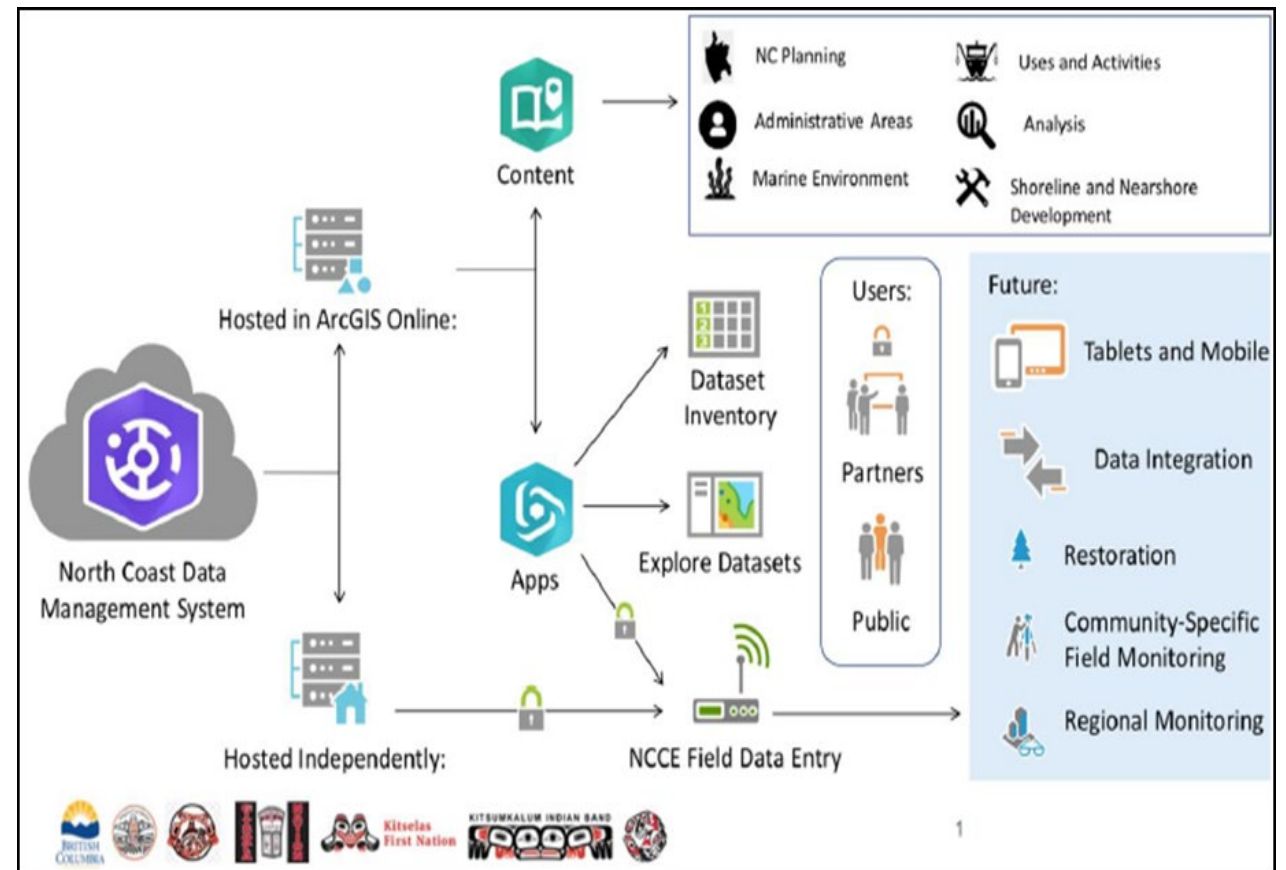
- Identified 33 initial priority values identified through multiple phases of collaborative engagement
- Four of these initial values are being advanced:
  - Aquatic Habitat: Estuaries
  - Food Security / Access to Resources (combined)
  - Salmon

Common North Coast First Nations Cumulative Effects Values: December 7th 2016		
1	Herring - including eggs, spawn on kelp	Species
2	Salmon (all species)	
3	Halibut (and other groundfish)	
4	Bivalves - including butter clams, cockles, mussels	
5	Eelgrass	
6	Marine vegetation (seaweed and kelp)	
7	Dungeness crabs	
8	Eulachon	
9	Abalone	
10	Terrestrial mammals (moose, deer, bear)	
11	Seabirds	
12	Marine mammals	
13	Marine and Freshwater quality	
14		Environment
15	Aquatic habitat - intertidal, subtidal, pelagic, benthic, estuarine, freshwater, wetland and riparian areas, coastal and inland old growth forests, glass sponge reefs	
16	Marine safety and navigability - wake, access	
17	Marine sediments	
18	Qualitative experience	
19	Acoustics (underwater noise, noise pollution)	
20	Human health and health services (including crime)	SocioEconomic
21	Access to resources	
22	Food security (preferred places/time/means) Where/what you want and quality and amount	
23	Commercial fisheries and marine based economy	
24	Indigenous trade	
25	Cultural identity (including cultural recognition)	
26	Knowledge transmission	
27	Resource management authority	
28	Community infrastructure/services	
29	Employment and Training (including education)	
30	Economic access	
31	Integrated knowledge (including cultural recognition)	
32	Housing	
33	Traditional governance systems (including relationships)	

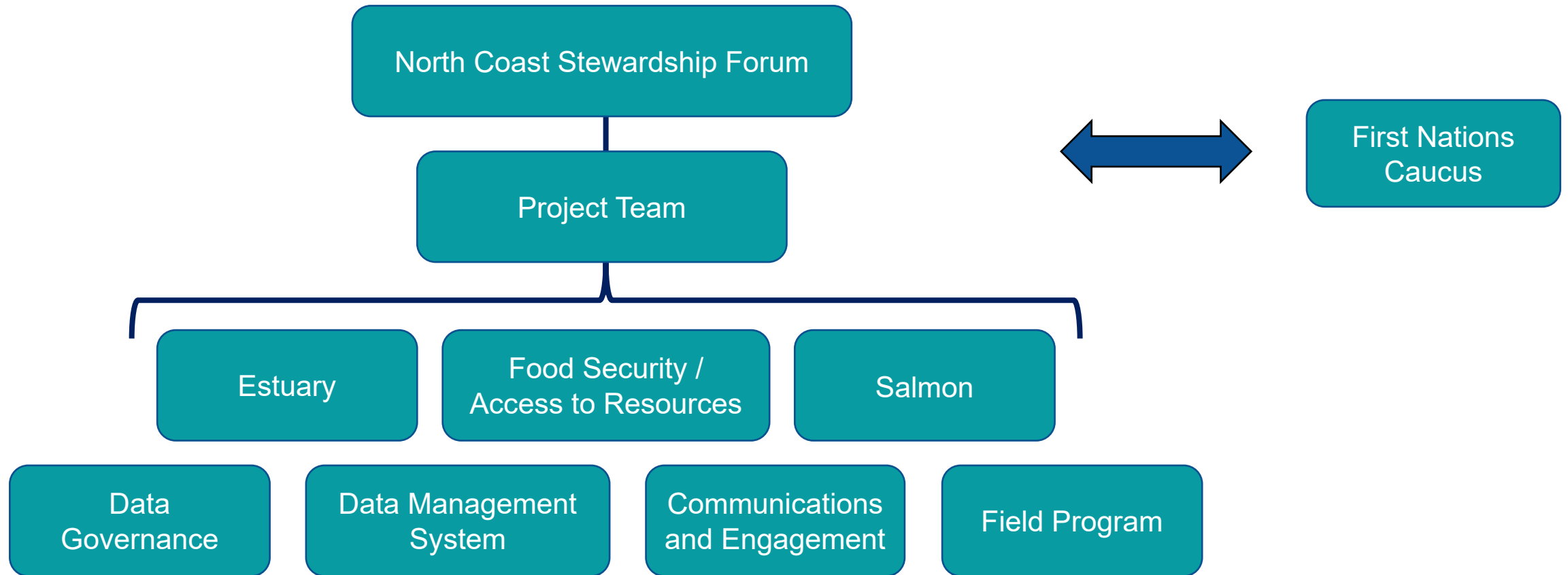
\*Numbers do not indicate ranking of importance/priority.

# Principle: Trusted Data for Decision Making

- Development of a Data Management System for collating, storing, viewing, assessing and reporting on NC CE values
- Provides a functional space for NC CE Program Partners to work together
- Data governance arrangements are under development and will be aligned with recognized principles (i.e., ownership, control, access, and possession) and best practices
- Incorporates IK and western science

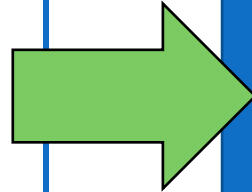


# Government-to-Government Partnership



# The Shift in CE Management

- Working in silos
- Lack of trusted data
- Resourcing within individual entities
- Unilateral decisions and management



- Working in collaboration
- Trusted and transparent data from multiple sources
- Leveraging skills, capacity and knowledge across partners
- Collaborative decisions and co-management

# LOOKING AHEAD

- Further acquisition of trusted data for the NC CE values:
  - Assessment protocols
  - Cumulative effects assessments
  - Current condition reports
- Scoping, engagement and implementation of identified management recommendations
- Ongoing monitoring and adaptive management
- Shared decision-making and co-management



# Acknowledgements

## NC CE Project Team:

Quinton Ball & Nicole Wallace – Kitsumkalum First Nation

James Herbert – Gitxaala Nation

Janine Pittman & Kyle Clifton – Gitga'at First Nation

Cindy Barwell & Sachiko Ouchi – Kitselas First Nation

Anna Osborne & William Nelson (past representatives) – Metlakatla First Nation

Mike Jacobs & Candice Wilson – Haisla Nation

Maria Faria – Ministry of Energy, Mines, and Low Carbon Innovation

Alli Morrison, Rachel Post, Rebecca Martone (past representative) & Melissa Lucchetta –  
Ministry of Land, Water and Resource Stewardship

Sukhvinder Kaeley & Oliver Dann – Ministry of Indigenous Relations and Reconciliation

Kyle Clifton – NC CE Field Program Coordinator

Melissa Meneghetti & CRM – NC CE Data Management Coordinator

Sarah Dansereau – NC CE Salmon Value Contract Support

Maya Paul, Holly Booker, Lia Chalifour & Grant Garner – North Coast-Skeena First Nations  
Stewardship Society

Acknowledging recent Fisheries and Oceans Canada staff supporting the Salmon Value work

## North Coast Stewardship Forum:

Chris Apps – Kitselas First Nation

Rina Gemeinhardt – Kitsumkalum First Nation

Chris Picard & Simone Reece – Gitga'at First Nation

Bruce Watkinson – Gitxaala Nation

Mike Jacobs & Candice Wilson – Haisla Nation

Ross Wilson – Metlakatla First Nation

Charles Short, Kristin Worsley & Carley Coccola –  
Ministry of Land, Water and Resource Stewardship

## Others that have supported the NC CE Program:

Partner Nation Field Crews

MaPP and ESI partners, current and past staff &  
collaborators

EcoFish, MNP, Swift Creek Consulting, Jana Kotaska



# Questions?

[maya.paul@ncsfns.ca](mailto:maya.paul@ncsfns.ca)  
[Carley.Coccola@gov.bc.ca](mailto:Carley.Coccola@gov.bc.ca)

# Let's continue the conversation!

Post questions and comments via chat in the IAIA22 platform.



## #iaia22

**Maya Paul and Carley Coccola**

*North Coast Cumulative Effects Program  
Canada*

[maya.paul@ncsfnss.ca](mailto:maya.paul@ncsfnss.ca); [Carley.Coccola@gov.bc.ca](mailto:Carley.Coccola@gov.bc.ca)